

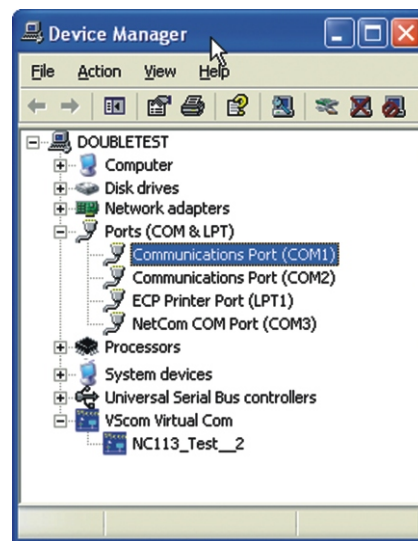
NETCOM ADVANCED SERIAL DEVICE SERVERS

Connect your serial Devices to Ethernet and Internet

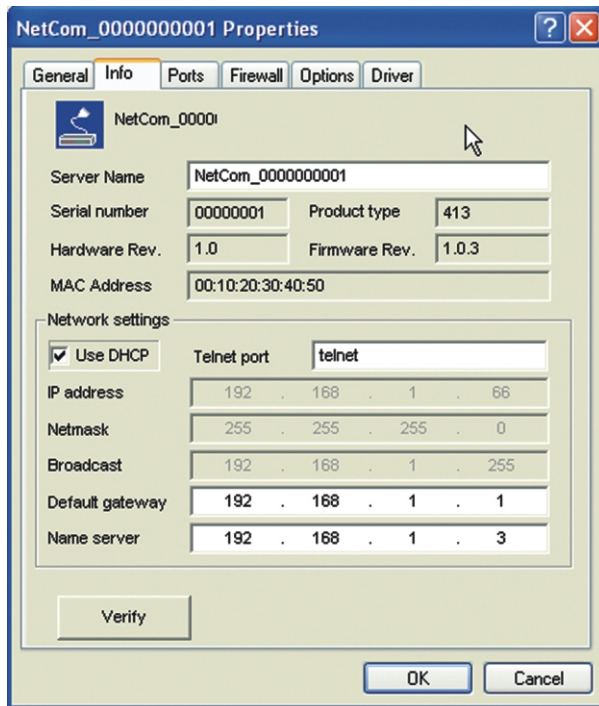


- Driver for Virtual Com, or Raw TCP Connection
- Easy to Use Installation & Configuration
- Configuration over Webbrowser
- Supports Windows 95/98/SE/ME, NT, 2000, XP, Linux

Netcom servers allow you to connect existing devices with serial interface to Ethernet and Internet. NetCom servers are intelligent and flexible gateways between Ethernet and serial ports, which allow to address serial ports over TCP/IP sockets. Additionally the NetCom Drivers make a remote serial port to act as a virtual local Com port. In this mode your original application can control remotely located devices directly over network.



Netcom appears in Device Manager



Netcom Configuration and Properties Settings

Technical Data:

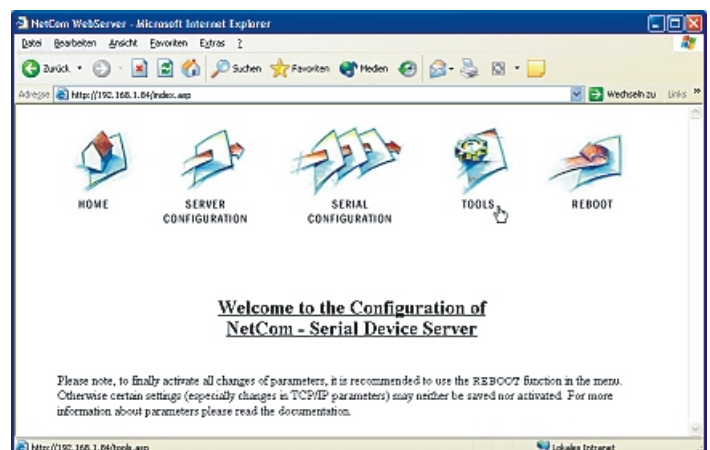
- 1, 2, 4 or 8 serial ports RS232 and RS232/422/485
- Fast Ethernet auto-detecting
- Serial speed up to 460 kbps
- Drivers for virtual serial ports: Win2K, WinXP
- TCP RAW connection server/client mode
- Configuration over webbrowser
- Protocols: TCP/IP, HTTP, Telnet, SNMP, UDP, DHCP, ICMP, DNS

Ordering Information:

- NetCom 111 1 x RS232
- NetCom 113 1 x RS232/422/485
- NetCom 211 2 x RS232 on RJ45
- NetCom 411 4 x RS232
- NetCom 413 4 x RS232/422/485
- NetCom 811 8 x RS232
- NetCom 813 8 x RS232/422/485



www.CoolGear.com
888-688-2188



Netcom Webbrowser